

U. S. Department of Labor

Mine Safety and Health Administration  
100 Bluestone Road  
Mount Hope, WV 25880-1000



DEC 18 2009

Mr. Chris Blanchard  
President  
Performance Coal Company  
P. O. Box 69  
Naoma, WV 25140

Dear Mine Operator:

Subject: Mine Ventilation Plan, Section 75.370, 30 CFR 75, Upper  
Big Branch Mine - South, I.D. No. 46-08436, Performance  
Coal Company, Montcoal, Raleigh County, West Virginia

This will acknowledge receipt of a revision to the ventilation plan, dated December 14, 2009, and submitted to this office December 16, 2009.

The ventilation revision requests to route a travelable return air course from the active MMU-029 into a common entry with MMU-040; make the #3 headgate entry a common intake air course with the existing primary escapeway; add a regulator to the overcast at the #1 Crossover on Headgate 1 North to allow the belt air to be reversed away from the longwall face; provide dewatering information; and project a future gateroad. A face sketch depicting mining Headgate 2 North with the belt line in #1 entry being ventilated with neutral air is included in the ventilation revision. In addition a face sketch is included depicting the typical longwall face ventilation for the No. 1 North Panel.

This revision is hereby approved and will be made a part of the approved plan for this mine. This approval is limited to the requested change as described in the submittal letter and shown on the attached map of the subject mine. **All ventilation changes will be made in accordance with 30 CFR 75.324.**

Please note, a second longwall panel will not be possible if the condition of the third entry of the #1 headgate cannot be maintained in adequate condition to comply with the requirements of 30 CFR 75.384. 30 CFR 75.384 requires a travelable tailgate entry for both current and future longwall panels. Additionally, the currently approved ventilation base plan and this revision require isolation of the tailgate entry to

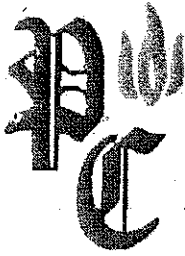
prevent the longwall tailgate travelway from being ventilated with air from the worked out area.

Should you have any questions concerning this matter, please contact the Ventilation Department at (304) 877-3900/Ext. 142.

**(b) (7)(C)**

Robert G. Hardman  
District Manager  
Coal Mine Safety and Health, District 4

Cc: Mt. Hope Field Office (3 incl.)/ Files/nlc



# Performance Coal Company

P.O. Box 69

Naoma, WV

25140

December 14, 2009

Mr. Robert G. Hardman  
Mine Safety and Health Administration  
100 Bluestone Road  
Mount Hope, WV 25880

Re: Performance Coal Company  
Upper Big Branch Mine  
MSHA ID: 46-08436  
State ID: U-3042-92  
Ventilation Revision

Dear Sir:

Please find attached a ventilation revision to route the travelable return from the active MMU 029-0 into a common entry with MMU 040-0. This revision will also make the #3 entry of the longwall headgate common with the bleeder air of the longwall. Prior to activation of the longwall section in the second Northern longwall panel, this future tailgate entry will be maintained travelable as required by 75.215 and isolated to comply with 75.334, 75.364(a)(2), and 75.384.

A drawing is attached showing the controls to be removed and installed for this revision. The return off of MMU 029-0 will be routed down the left side of North Glory Mains where it will cross overcasts on Headgate 1 North and be sent up Tailgate 1 North to the return shaft. The previous return entry will be made common with the belt along the #2 Crossover and with the longwall intake along Headgate 1 North. EP-LW1, MP A, and MP@X-Cut36 will now include the #3 entry. A regulator will be added in the overcast at the #1 Crossover on Headgate 1 North. This will allow the belt air to be reversed away from the longwall face. A typical longwall face sketch is included showing this change.

A face sketch is also included showing mining with the #1 entry containing the belt. This scheme will be used to mine Headgate 2 North. Please also find as a part of this revision, the bottom contour elevations in the bleeders of the active longwall. This will also show the dewatering system in place to handle future inflows of water and to keep ventilation uninterrupted.

This revision is limited to the changes shown. All previously approved plan contents will be adhered to. There is currently no miner's representative at the Upper Big Branch Mine. This plan will be posted at the mine office.

Respectfully Submitted,

**(b) (7)(C)**

Matthew Walker  
Mine Engineer  
Performance Coal Company

MSHA  
MOUNT HOPE WV

DEC 14 2009

RECEIVED  
VENTILATION

**TYPICAL LONGWALL FACE VENTILATION**  
 Performance Coal Company  
 Upper Big Branch Mine 46-08436 (U-3042-92)  
 No. 1 North Panel (Belt Air)

REV. 1 4 2009

RECEIVED VENTILATION

EP - LW1

SOLID COAL

SOLID COAL

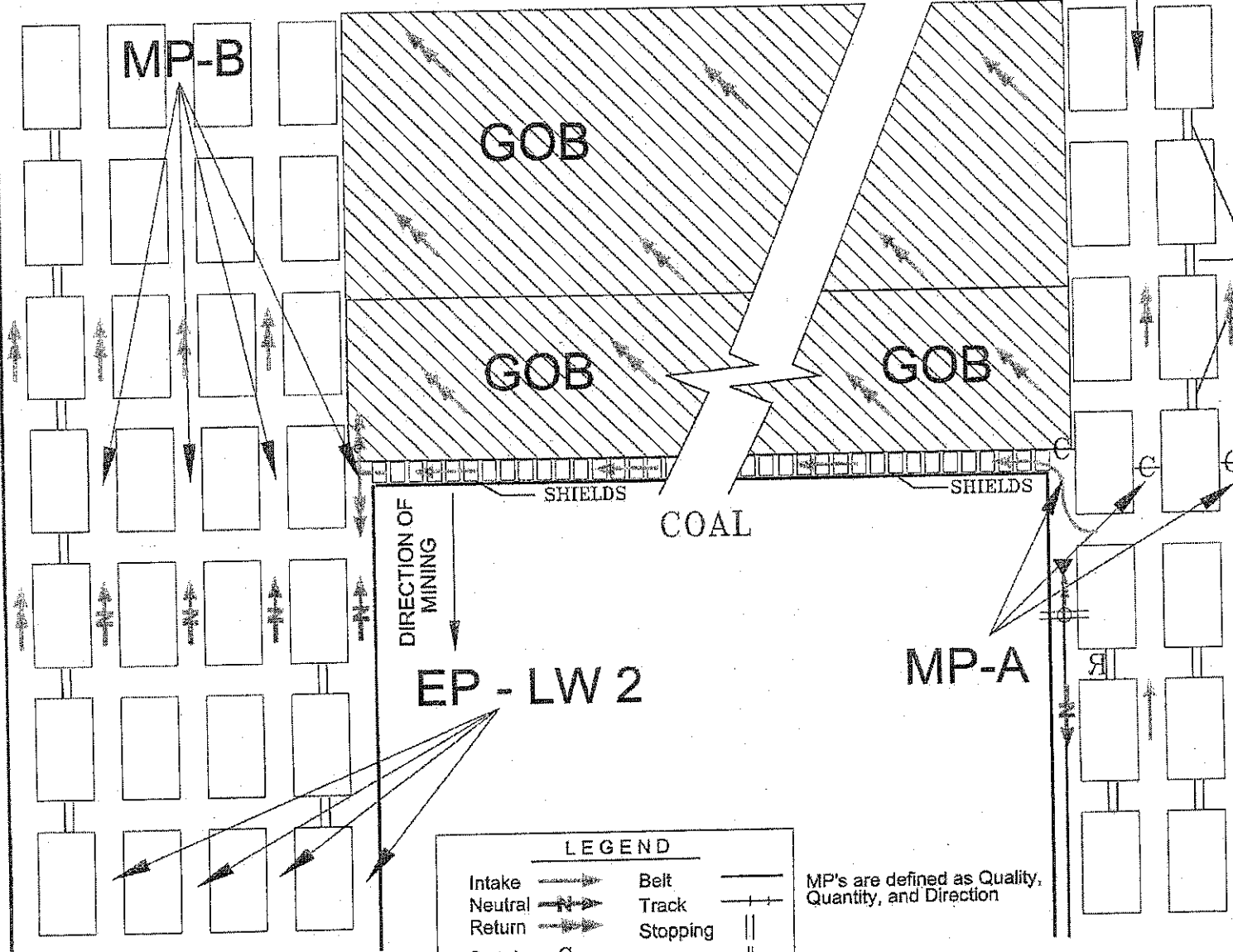
SOLID COAL

Stoppings will be removed at least every 800 ft to make entries common. Each stopping will be reconstructed to isolate the tailgate entry prior to mining second longwall panel.

SOLID COAL

MP-C

SOLID COAL



DIRECTION OF MINING

GOB

GOB

GOB

SHIELDS

COAL

SHIELDS

EP - LW 2

MP-A

MP-B

EP - LW1

LEGEND

- Intake
- Neutral
- Return
- Curtain
- Belt
- Track
- Stopping
- Box Check

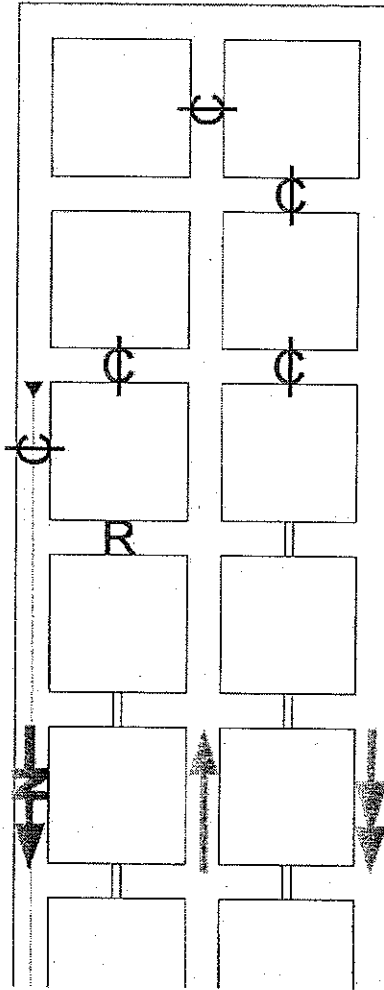
MP's are defined as Quality, Quantity, and Direction

Not to Scale

MSHA  
MOUNT HOPE, WV

DEC 14 2009

RECEIVED  
VENTILATION



- Intake Air
- ← Return Air
- ↔ Secondary Intake Air
- || Permanent Stopping
- ▼ Belt Tailpiece
- R Regulator
- ⊕ Curtain
- ⊞ Box Check

\* Where any equipment will run through ventilation controls, they shall be substantially constructed as follows: Fly boards shall be installed rib to rib and fly pads will be installed overlapping so that a double thickness of ventilation material is achieved.

\* No shuttle cars will travel through line curtain that is ventilating the face.

	PERFORMANCE COAL COMPANY, INC. <small>P.O. BOX 68, NAOMA, WV 25143</small>		
	UPPER BIG BRANCH MINE		
<small>M.S.H.A. ID No. 46-05436</small>	<small>WV ID No. U-3042-92</small>		
<small>PREPARED BY</small> 	<small>Date: 11/30/09</small>	<small>SCALE: NA</small>	
<small>DRAWN BY: RL 3 Staff</small>	<small>DWG No. 1 of 1</small> <small>CHECKED BY:</small>		
Face Ventilation Typical Gate Road Development			
VENTILATION PLAN			

Upper Big Branch Mine  
46-08436

Mine Segment	Distance	# Entries	Area	R, 1000 ft	Total R	Q beginning	Q end	Gain or Losses	Average Q	Q squared	Segment H	Total H
Headgate:												
Intake	10600	1	140	0.06	0.636	150000	30000	120000	90000	0.81	0.51516	0.51516
Neutral	10600	1	140	0.15	1.59	30000	10000	20000	20000	0.04	0.08360	0.57876
Return	10600	1	140	0.12	1.272	120000	20000	100000	70000	0.49	0.62328	1.20204
Across Face						-----Measured-----					0.10000	1.30204
											<b>Additional Head Loss:</b>	<b>1.30204</b> inches water

Existing Return:												
Return	6935	2	140	0.03	0.20805	120000	20000	100000	70000	0.49	0.10194	0.10194
Return	6433	1	140	0.12	0.77196	120000	20000	100000	70000	0.49	0.37826	0.48020
Return	4439	4	140	0.0075	0.03329	120000	20000	100000	70000	0.49	0.01631	0.49652
Overcasts	Equivalent Length for Overcast = 65 ft						7 Overcasts				0.02675	0.52327
											<b>Existing Return Loss:</b>	<b>0.52327</b> inches water

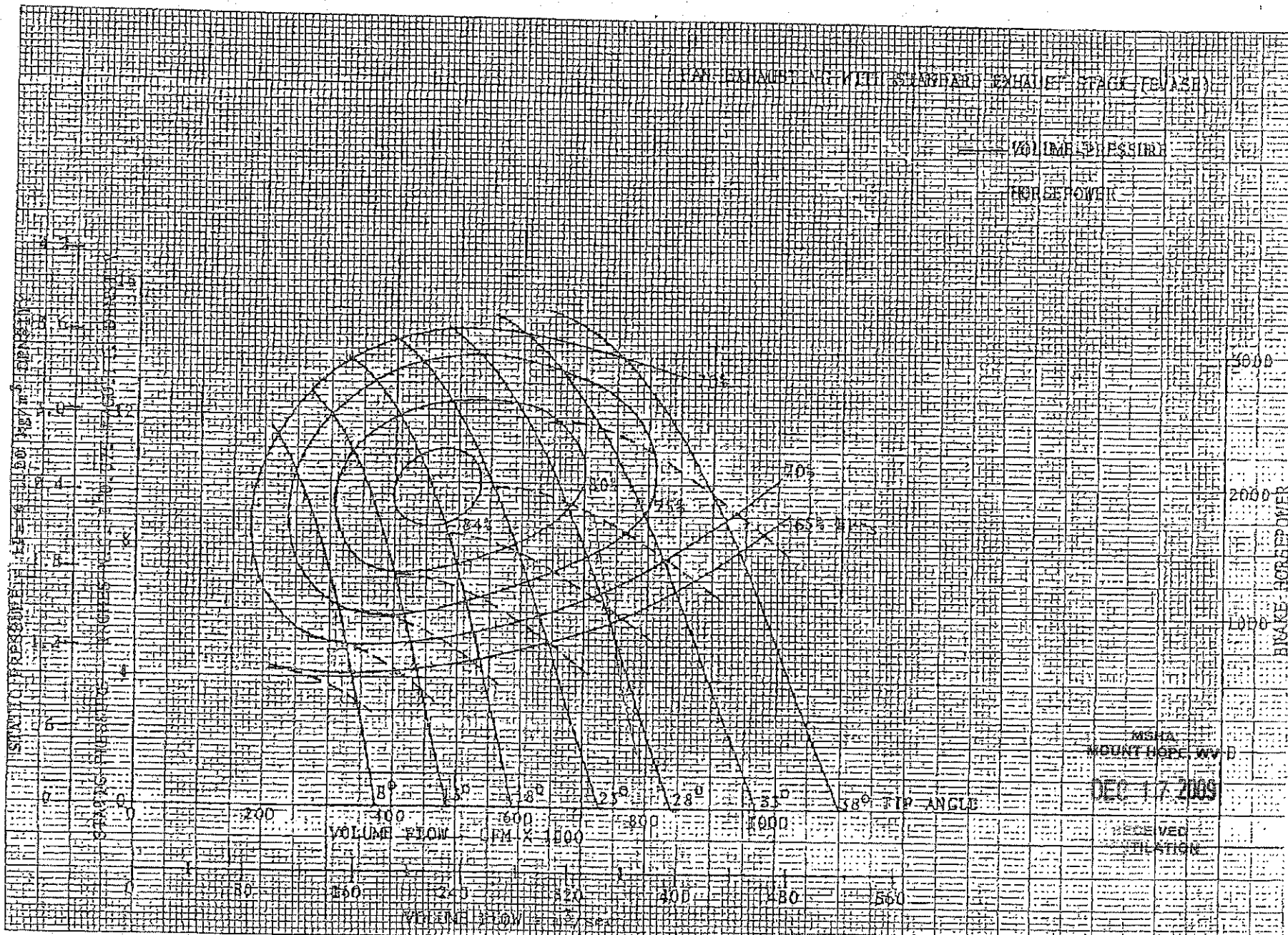
**Total Head Loss: 1.82531 inches water**

The above tables show the additional head loss resulting from the mining of the #2 Headgate at Upper Big Branch Mine. The top portion shows the additional head required to maintain necessary quantities of air to operate. After further consultation with Paul's Repair Shop (who designed and manufactured the exhausting fan), it is evident that the exhausting fan in a standalone system would have a reserve of approximately 10 times the capacity of current operation. With the current push-pull ventilation scheme, this reserve would be nearly doubled. Therefore, the 1.3 inches of water is minimal in comparison to the capacity of the ventilation system. The bottom portion shows the head loss through the existing return path, including shock loss from overcasts. The current operating pressure of the blowing fan is 5.5" and the exhausting fan is 4.0". Fan curves for both fans are attached.

MSHA  
MOUNT HOPE, WV

DEC 17 2009

RECEIVED  
VENTILATION



APRIL 1, 1982

JOY AXIVANE MINE FAN

DEC 17 2009

Robinson Industries, Inc.

Fan Speed : 280 RPM

Date : 8/23/2007

Fan : 99.25" x 24.313" AF1029 with 90 deg bkl kinger SWSi

Temperature : 65 °F

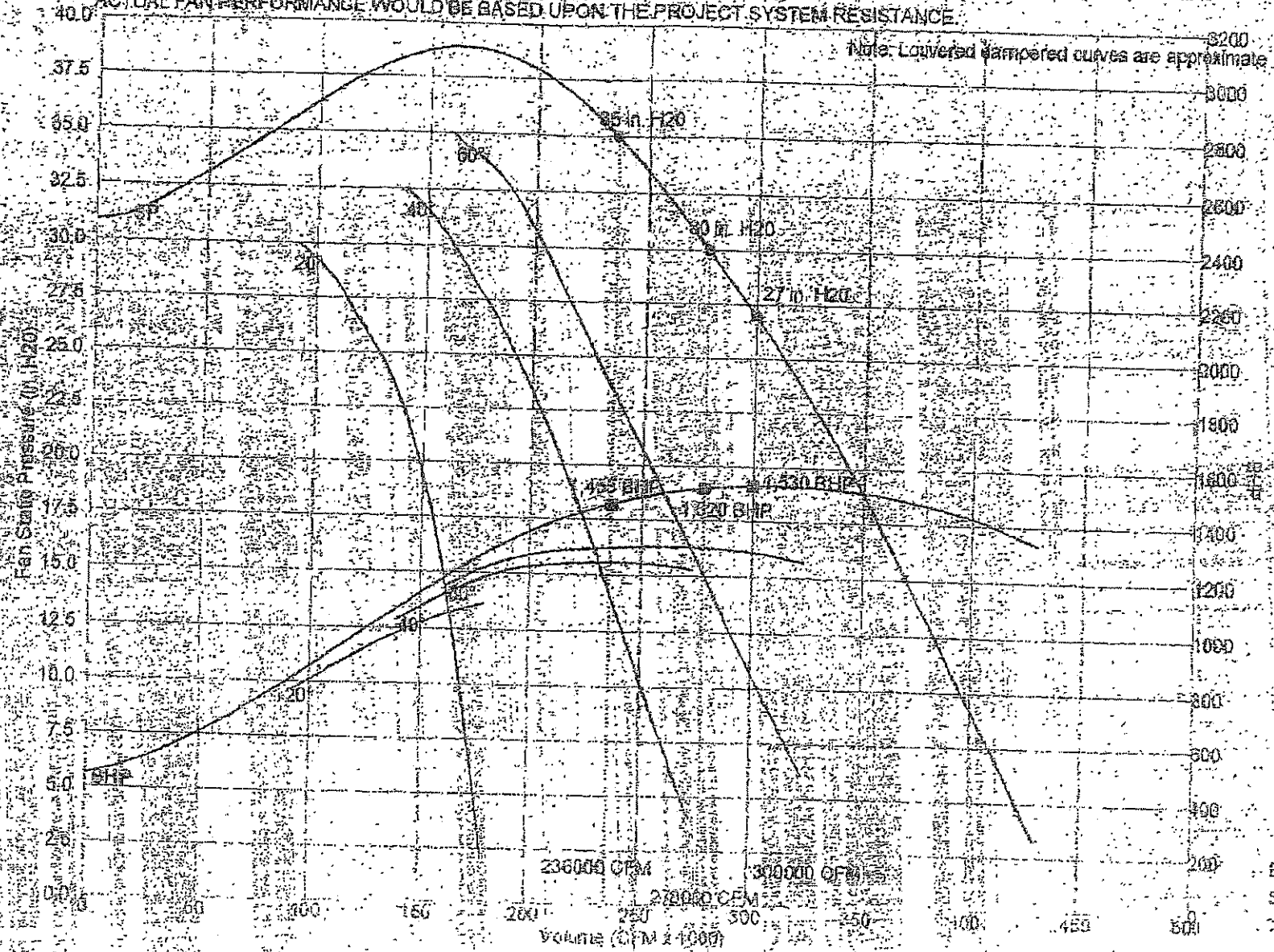
Quote Number : G51957-01

For : PAULS REPAIR SHOP

Density : 0.0709 LB/FT<sup>3</sup>

RECEIVED  
VENTILATION

ACTUAL FAN PERFORMANCE WOULD BE BASED UPON THE PROJECT SYSTEM RESISTANCE.



7-19-1995 11:09PM FROM

ES 1  
SE 09  
TF 05



UBB 12/23/09 ✓

U. S. Department of Labor

Mine Safety and Health Administration  
100 Bluestone Road  
Mount Hope, WV 25880-1000



**DEC 23 2009**

Mr. Chris Blanchard  
President  
Performance Coal Company  
POB 69  
Naoma, WV 25140

Dear Mr. Blanchard:

Subject: Mine Ventilation Plan, Section 75.370, 30 CFR 75, Upper  
Big Branch Mine-South, I.D. No. 46-08436, Performance  
Coal Company, Montcoal, Raleigh County, West Virginia

This will acknowledge receipt of the ventilation revision dated and received by MSHA on December 23, 2009. The ventilation revision describes the issues resulting from the attempt to implement the December 18 belt air reversal approval and subsequent actions to limit the exposure to miners from belt air and commits to a long-term belt air elimination plan.

The revision is hereby approved and will become a part of the approved plan for this mine. The approval is limited to the requested changes as described in the submittal.

Should you have any questions concerning this matter, please contact the Ventilation Department at (304) 877-3900/Ext. 142.

Sincerely,

ROBERT G. HARDMAN

Robert G. Hardman  
District Manager  
Coal Mine Safety and Health, District 4

Cc: Mt. Hope Field Office (3incl.)/ Files/nlc

SUPERVISORY ACKNOWLEDGEMENT

RLC 12/23/09  
Initials Date

U. S. Department of Labor

Mine Safety and Health Administration  
100 Bluestone Road  
Mount Hope, WV 25880-1000



DEC 23 2009

Mr. Chris Blanchard  
President  
Performance Coal Company  
POB 69  
Naoma, WV 25140

(b) (7)(C)

*received by  
12/23/09*

Dear Mr. Blanchard:

Subject: Mine Ventilation Plan, Section 75.370, 30 CFR 75, Upper  
Big Branch Mine-South, I.D. No. 46-08436, Performance  
Coal Company, Montcoal, Raleigh County, West Virginia

This will acknowledge receipt of the ventilation revision dated and received by MSHA on December 23, 2009. The ventilation revision describes the issues resulting from the attempt to implement the December 18 belt air reversal approval and subsequent actions to limit the exposure to miners from belt air and commits to a long-term belt air elimination plan.

The revision is hereby approved and will become a part of the approved plan for this mine. The approval is limited to the requested changes as described in the submittal.

Should you have any questions concerning this matter, please contact the Ventilation Department at (304) 877-3900/Ext. 142.

(b) (7)(C)

Robert G. Hardman  
District Manager  
Coal Mine Safety and Health, District 4

U. S. Department of Labor

Mine Safety and Health Administration  
100 Bluestone Road  
Mount Hope, WV 25880-1000



DEC 23 2009

Mr. Chris Blanchard  
President  
Performance Coal Company  
POB 69  
Naoma, WV 25140

Dear Mr. Blanchard:

Subject: Mine Ventilation Plan, Section 75.370, 30 CFR 75, Upper  
Big Branch Mine-South, I.D. No. 46-08436, Performance  
Coal Company, Montcoal, Raleigh County, West Virginia

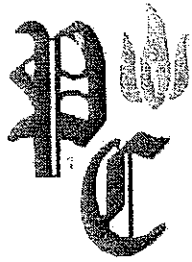
This will acknowledge receipt of the ventilation revision dated and received by MSHA on December 23, 2009. The ventilation revision describes the issues resulting from the attempt to implement the December 18 belt air reversal approval and subsequent actions to limit the exposure to miners from belt air and commits to a long-term belt air elimination plan.

The revision is hereby approved and will become a part of the approved plan for this mine. The approval is limited to the requested changes as described in the submittal.

Should you have any questions concerning this matter, please contact the Ventilation Department at (304) 877-3900/Ext. 142.

**(b) (7)(C)**

Robert G. Hardmarf  
District Manager  
Coal Mine Safety and Health, District 4



# Performance Coal Company

P.O. Box 69

Naoma, WV

25140

December 23<sup>rd</sup>, 2009

Mr. Robert G. Hardman  
Mine Safety and Health Administration  
100 Bluestone Road  
Mount Hope, WV 25880

Re: Performance Coal Company  
Upper Big Branch Mine  
MSHA ID: 46-08436

Dear Sir:

On December 18<sup>th</sup> a ventilation plan was approved by your office. On December 21<sup>st</sup> and 22<sup>nd</sup> this plan was attempted to be implemented. Due to the influence of the longwall bleeder fan it was not possible to make the approved changes.

Please find attached an interim ventilation revision to allow the belt air to course towards the longwall face. Belt air will travel inby from near crosscut 25 on the 1 North Headgate. The remainder of the belt air will travel outby through a belt regulator and into the return.

The below procedures will be followed during the time while belt air is being utilized in the face of the 1 North Longwall panel.

1. The entire length of the belt conveyor system from the split point inby to the longwall face will be traveled every two hours. Results of this examination will be communicated to the longwall foreman at the end of each inspection.
2. A box check will be installed at the longwall tailpiece and near the 029-0 MMU belt drive to limit the quantity of belt air traveling inby.
3. All personnel working on the 1 North longwall panel will be informed of this ventilation change.

In addition, within 30 days of approval, a long term ventilation plan will be submitted to your office which will show long term solutions to allow belt air to travel outby as well as to open more intake air courses.

These safety precautions will ensure equal or greater protection for members working on the longwall section.

This mine currently has no miner's representative. If you have any questions or comments, feel free to contact me at (304) 854-3516.

Respectfully Submitted.

**(b) (7)(C)**

Chris Blanchard  
President

MSHA  
MOUNT HOPE, WV  
DEC 23 2009

RECEIVED  
VENTILATION

MSHA  
MOUNT HOPE, WV  
DEC 23 2009

RECEIVED  
VENTILATION